



THE ROBBIE

4497 SUMMEY STREET
LOT#13

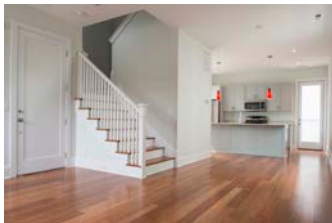


\$399,900 | 1,694 SF | 3 BR + 3 BA

COMMUNITY FEATURES

- Park Circle in your backyard
- Smart, green design
- Grand trees, pocket parks, central outdoor spaces, bocce courts and The Barn
- Amenities to make you smile
- Walkable neighborhood restaurants and retail

COMMON AREA FINISHES



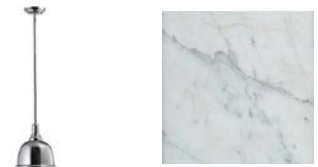
- Bamboo floors in common areas
- Carpet in bedrooms
- Three custom lighting package selections

MASTER BATH FINISHES



- Shaker cabinets in three colors
- Tile selection options
- Cultured marble tops

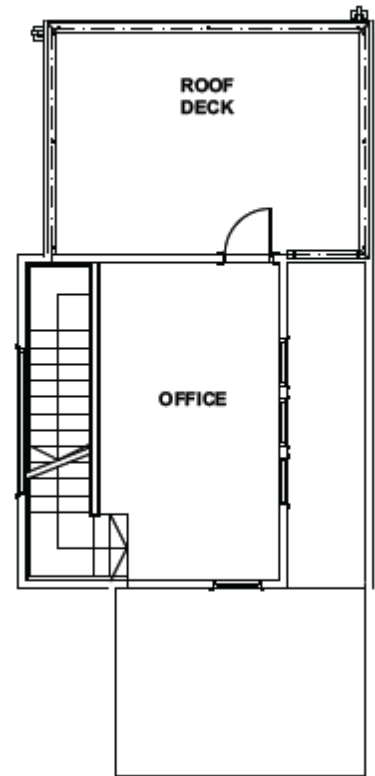
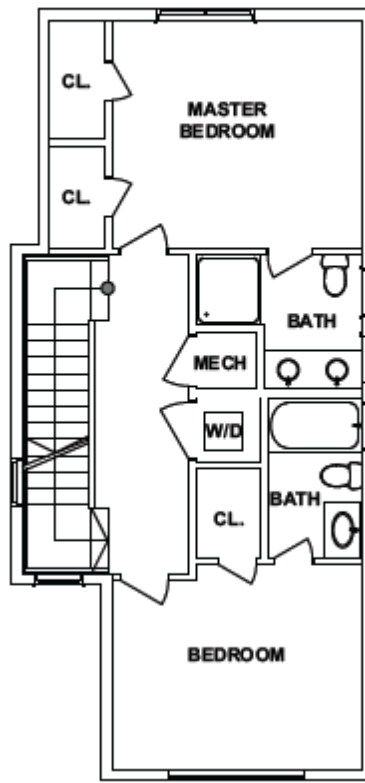
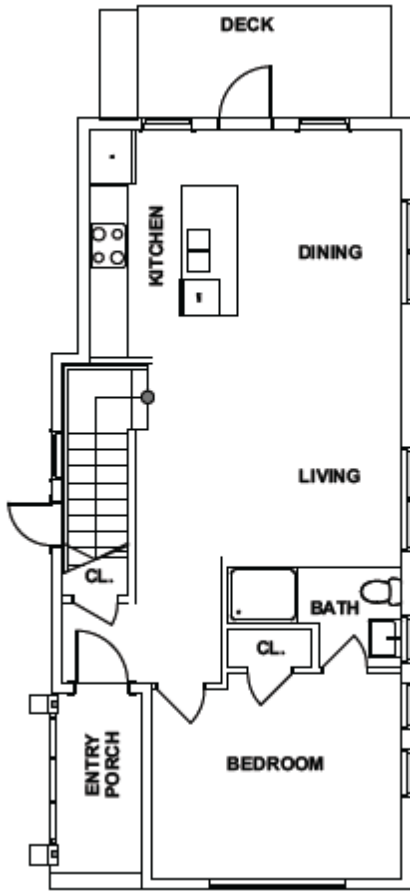
KITCHEN FINISHES



- Shaker cabinets in three colors
- Granite counter selections
- Stainless appliances

THE ROBBIE

Floor Plans



All rights reserved. All information is believed to be accurate but is not warranted. These materials and the features and amenities described and depicted herein are based upon current development plans, which are subject to change without notice. Artist's renderings are for demonstration purposes only.

